

Gabriel Fauré Requiem, Op. 48

N°1 INTROÏT et KYRIE N°2 OFFERTOIRE N°3 SANCTUS
N°4 PIE JESUS N°5 AGNUS DEI TACENT

VI LIBERA ME

1^{er} et 2^e TROMBONES

Moderato.

A B C D Cors

10 9 17 7 8 f

This block contains the first system of the musical score for the 1st and 2nd Trombones. It is marked 'Moderato.' and consists of measures 10 through 17. The score is written in two staves (treble and bass clefs). Above the staves, the letters A, B, C, and D are placed over measures 10, 11, 12, and 13 respectively. Above measure 17, the word 'Cors' is written. A dynamic marking of *f* (forte) is placed below measure 15. The key signature has one flat (B-flat), and the time signature is common time (C). The system ends with a double bar line and a repeat sign.

Più mosso.

(1) (2) (3) (4)

This block contains the second system of the musical score, marked 'Più mosso.' It consists of measures 18 through 21. The score is written in two staves. Above each measure, there is a circled number: (1) for measure 18, (2) for measure 19, (3) for measure 20, and (4) for measure 21. A dynamic marking of *f* (forte) is placed below measure 19. The key signature has one flat, and the time signature is common time. The system ends with a double bar line and a repeat sign.

Trombones

E

5 f 4

This block contains the third system of the musical score, marked 'Trombones'. It consists of measures 22 through 25. The score is written in two staves. Above measure 25, the letter E is placed. A dynamic marking of *f* (forte) is placed below measure 23, and a dynamic marking of *p* (piano) is placed below measure 24. A circled number 5 is placed below measure 22, and a circled number 4 is placed below measure 25. The key signature has one flat, and the time signature is common time. The system ends with a double bar line and a repeat sign.

F G

f p 11 3

This block contains the fourth system of the musical score, marked 'F' and 'G'. It consists of measures 26 through 27. The score is written in two staves. A dynamic marking of *f* (forte) is placed below measure 26, and a dynamic marking of *p* (piano) is placed below measure 27. Circled numbers 11 and 3 are placed below measures 26 and 27 respectively. The key signature has one flat, and the time signature is common time. The system ends with a double bar line and a repeat sign.

H Moderato.

5 *pp* *p* *pp* 5

J

pp 3 *pp* *poco*

K

pp 1 1 *pp* *meno p*

L

cresc *f* *sempre f*

L

dim *p* *pp* 13

Nº 7 IN PARADISUM TACET

REQUIEM

1st & 2nd Trombones

Nº 1 INTROÏT et KYRIE

Nº 2 OFFERTOIRE

Nº 3 SANCTUS

Nº 4 PIE JESU

Nº 5. AGNUS DEI

TACENT

VI LIBERA ME

Moderato

10

(A)

9

(B)

13

Tempo
4

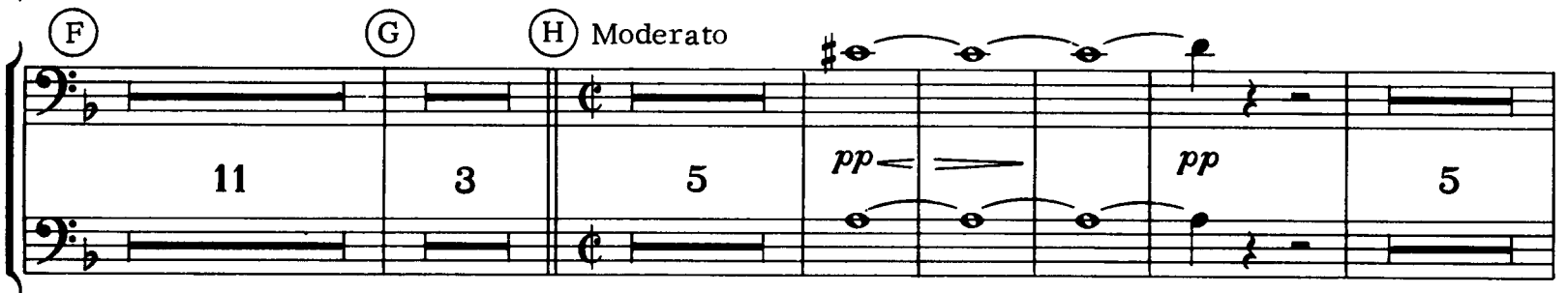
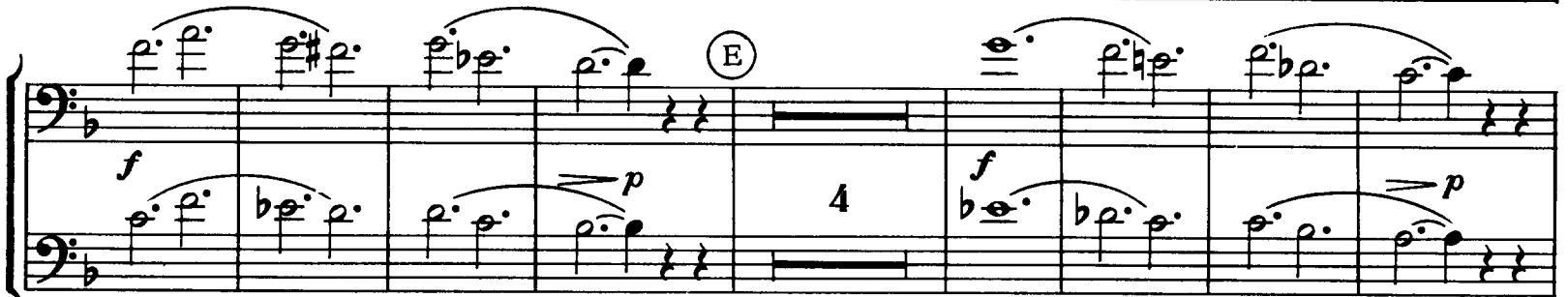
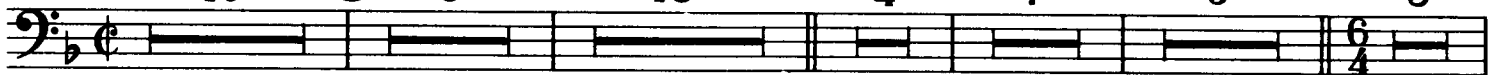
(C)

7

(D)

9

piu mosso
5



Nº 7 IN PARADISUM **TACENT**

Gabriel Fauré
Requiem, Op. 48

Nº 1 INTROÏT et KYRIE Nº 2 OFFERTOIRE Nº 3 SANCTUS
Nº 4 PIE JESU Nº 5 AGNUS DEI TACENT

VI LIBERA ME

3º TROMBONE

Moderato. Più mosso.

10 A 9 B 17 C 7 D 9 6 4 1

Tromb.

Di - es il - la Di - es i - rae *f*

E 4 *f* *p* F 11

Mod^{to} G 3 H 1 2º Tromb. *pp*

lu - ce - at e - is

3º Tromb. *p* *pp* *pp* J 5

3 *pp* *poco.* *pp* 1 K 1 *pp*

meno p *cresc.* *f* *sempre f*

L 14 *dim.* *p* *pp*

Nº 7 IN PARADISUM TACET